



**WHEN  
EDGAR  
MET  
ESSA**

**FORT BEND ISD  
STATE & FEDERAL PROGRAMS  
DEIRDRE HOLLOWAY, DIRECTOR  
TAMMU OBEY, COORDINATOR  
JENNIFER SOWELLS, COORDINATOR**

The image features a pair of rich red, heavy curtains with gold tassels, pulled back to reveal a white background. The curtains are draped in a classic, theatrical style, framing the central text.

# **What's Poppin' in FBISD?**

ACET 2019 Fall Conference  
October 23, 2019



# CINEMA

MOVIE TIME



A 3D-rendered scene of a red carpet event. A bright red carpet runs down the center of the frame, flanked by two rows of white stanchions connected by red velvet ropes. The stanchions recede into the distance, creating a sense of depth. In the background, a large green rectangular sign is mounted on a wall, displaying text. The scene is framed by heavy, draped red curtains on both sides, suggesting a theater or a formal event space. The lighting is soft and even, highlighting the textures of the carpet, ropes, and curtains.

**THE FOLLOWING PREVIEW HAS BEEN  
APPROVED FOR ACET AUDIENCES**

A red carpet event scene with stanchions and a central text box. The scene is set on a red carpet that recedes into the distance. On either side of the carpet are rows of gold stanchions connected by red velvet ropes. In the background, there are red curtains. A large black rectangular box with a white border is centered in the upper half of the image, containing the text for the cast.

CAST

Director

Deirdre Holloway

TI Coordinator

Tammu Obey

TI Coordinator

Jennifer Sowell

Production Co.

Fort Bend ISD

# Profile of a Graduate



A Fort Bend ISD Graduate has a rigorous foundation, strong character and is . . .

- . . . equipped with skills for life.
- . . . a servant leader.
- . . . an effective communicator.
- . . . a critical thinker.
- . . . a compassionate citizen.
- . . . a collaborative team member.
- . . . a life-long learner.



# Movie Preview

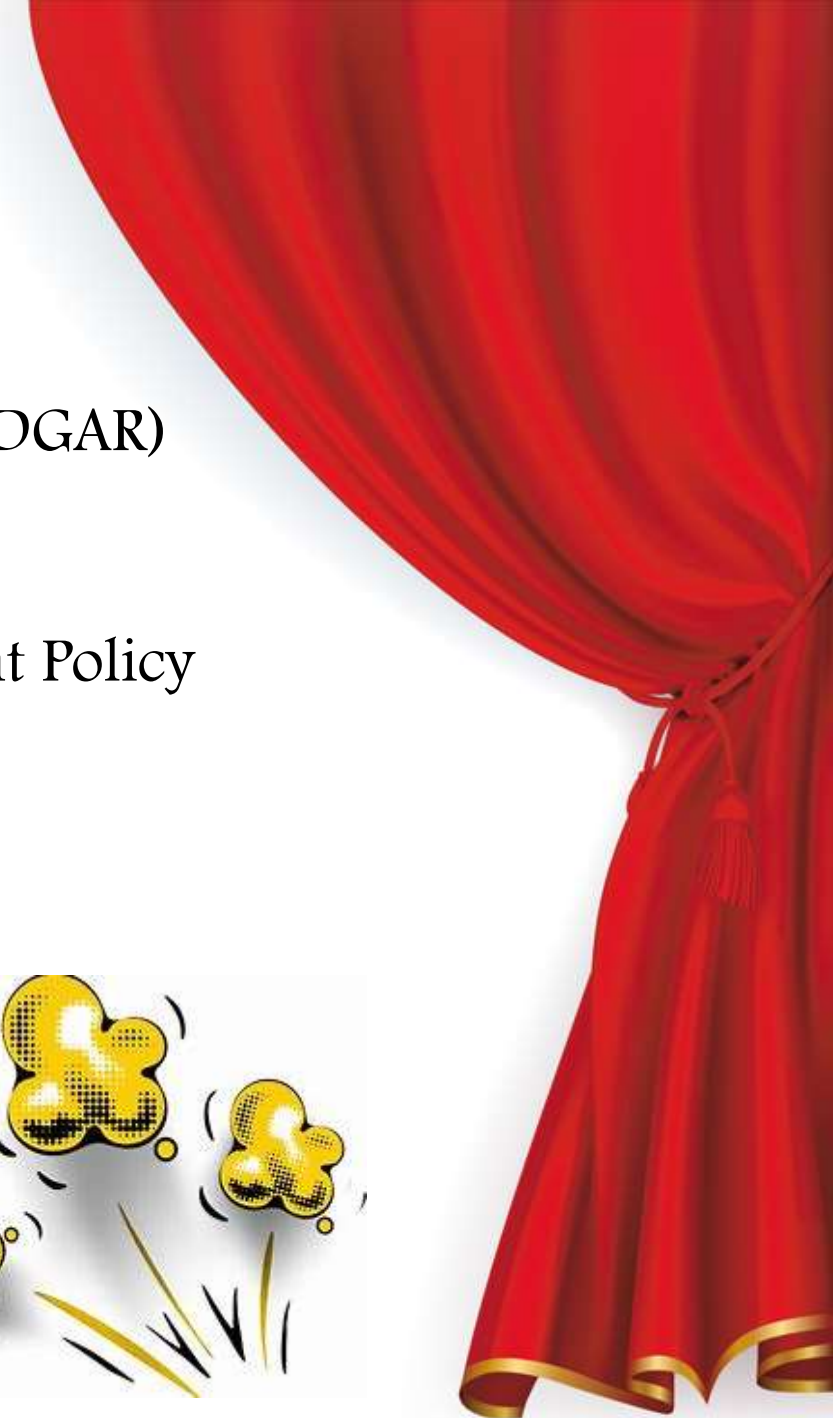
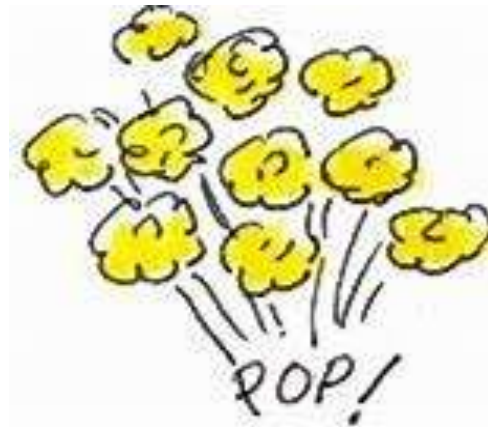
Data Driven Expenditures & Academic Budget Decisions (EDGAR)

CNA/CIP

Parent Educators, Grade Level Compact & Family Engagement Policy

Campus Documentation

Title I Campus Support and One-on-One Meetings



LEAN  
ON ME



# Principals are Instructional Leaders!

Instructional Title I Budget

We **LEAN** on.....

Accountability

Campus Needs Assessment/Campus Improvement Plan

Academics

Discipline Data

Student Attendance

**District Campus Walk-Throughs**



# EDGAR

Education Department General Administrative Regulations

- Services
- Contracts
- Materials
- Travel
- Reasonable and Allowable
- Communication with Purchasing Dept.
- Approved Vendors
- Instructional Resource Department

# Allowable Purchases & Services

- Reasonable, Necessary, Allocable
- Campus Needs Assessment (CNA)
- Campus Improvement Plan (CIP)
- Evaluation of Expenditure or Service

## Campus Resources

- Pre-Approved Curriculum
- General Allowable/Unallowable List
- TEA Strategic Priority Guide
- TEA Use of Funds Questionnaire



the  
OSCARS  
NOMINATIONS

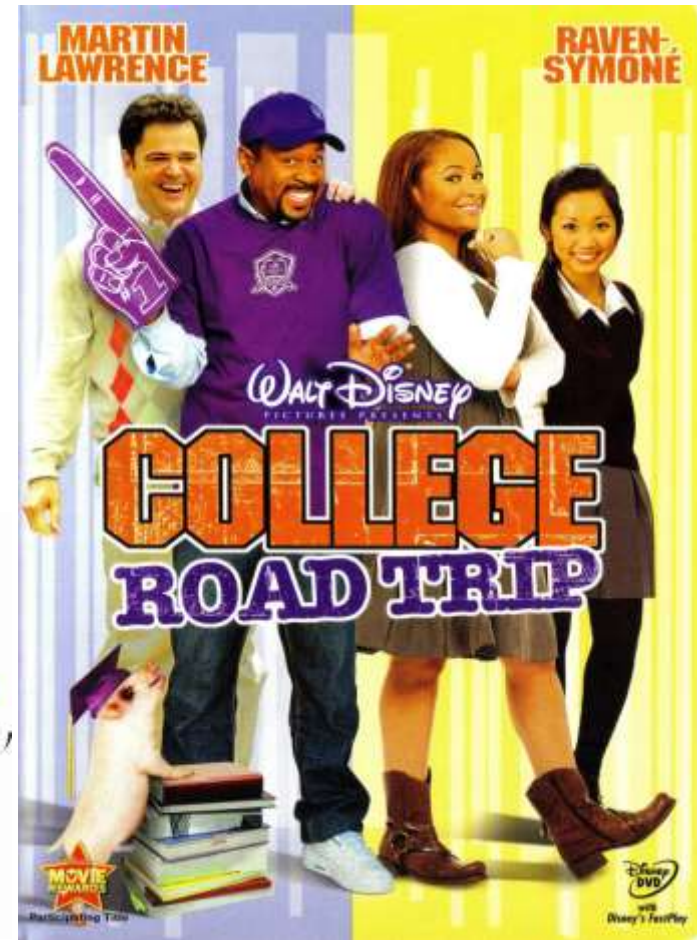
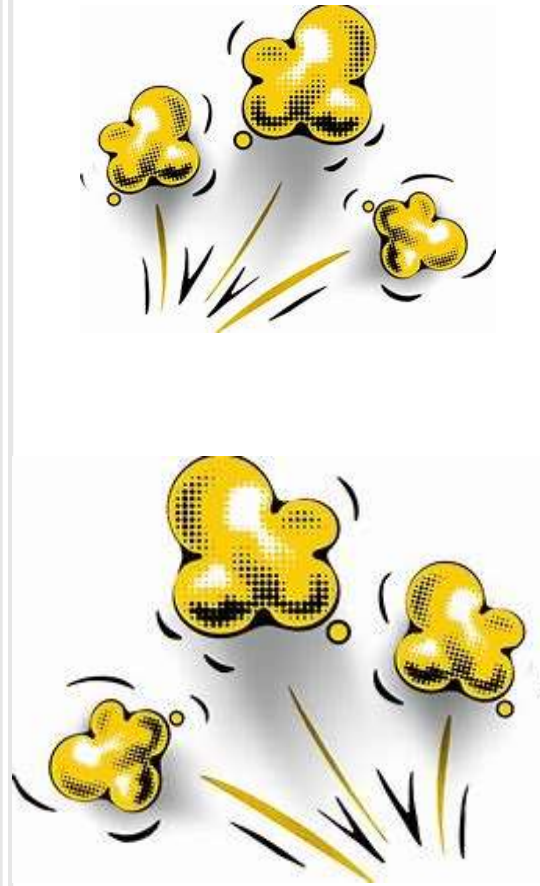
# Allowable Field Trips

- Reasonable and Necessary
- Difficult to Duplicate in Classroom & Extension of Learning
- CNA/CIP Alignment
- Lesson Plan (including TEKS)
- 25% Rule

## Campus Resources and Forms


*-Lesson Plan Template*

*-Pre-Approved Field Trip List*



the  
OSCAR<sup>®</sup>  
NOMINATIONS

# TI Campus Inventory Management

1. Establish a Campus Point-of-Contact (SCR).
  2. Secretary ensures delivered items are accounted for.
  3. Delivered items remain in designated area for SCR.
  4. SCR labels then distributes items to specified staff via check out sheet. *Pastel Blue Labels [campus, Title \_, PO, date]*
  5. Mid-year, SCR receives TI campus inventory list (2 years).
  6. One column is left blank for LOCATION/STATUS.
  7. The SCR begins locating listed items and adding room numbers to LOCATION/STATUS column. Add to Crate.
  8. Physical audits are conducted by District TI Coordinators in May/June. Final inventory is filed on TI Crate.
- 

# INVENTORY MANAGEMENT (CONT'D...)

## **Missing/Stolen Items**

- Fixed Asset Form
- Campus Investigation
- Case Report to IT (as applicable)
- Police Report, if Stolen

## **Damaged/Obsolete/Transferred Items**

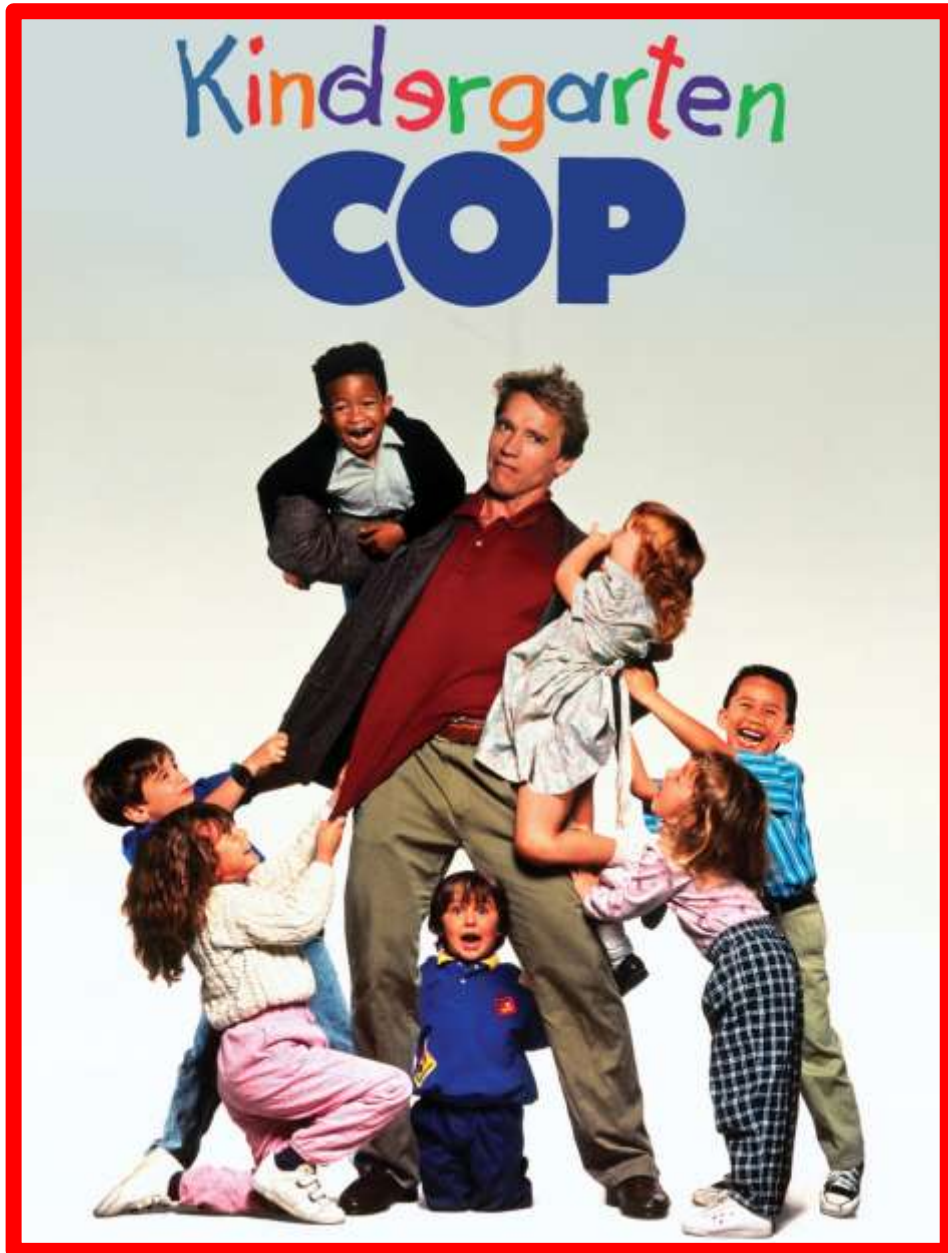
- Fixed Asset Form
- File on Crate



# Parent Educators

- Every Title I Campus has a Parent Educator funded by State & Federal Programs department.
- Engage families in helping to educate their children.
- Organize, facilitate and monitor all parent and family engagement activities / classes aimed at parent education that supports home learning.
- Ensure that all Title I requirements related to parent and family engagement are met.





# Grade Level Compact

- Parent Educator organizes a Focus Group to meet and discuss grade level compacts.
- Focus Group reviews academic data to determine strengths and weaknesses of each grade level.
- Focus Group provides DPAC campus committee with information to develop compacts.
- DPAC campus committee reviews and approves compacts for dissemination.
- Grade level compacts are discussed with students and parents (Title I Night, conferences, webpage, etc.).

# Family Engagement Policy

- Parent Educator organizes a Focus Group to meet and discuss campus engagement policy.
- Focus Group reviews survey data to determine needs of campus.
- Focus Group provides DPAC campus committee with information to develop policy.
- DPAC campus committee reviews and approves policy for dissemination.
- Parent & Family Engagement policy is discussed with students and parents (Title I Night, conferences, webpage, etc.).



# Campus Documentation

- Title I Coordinators train TI campus personnel on the required Title I documentation.
- A list of required documentation with due dates (timeline) is provided to each TI campus personnel.
- Title I campus personnel gather required documentation and upload in Title I Crate periodically.
- Title I Coordinators review uploaded documentation and communicate with campus to ensure compliance is met.



# State & Federal Programs Cast

Executive Director, Student Support Services	Deena Hill
Director	Deirdre Holloway
Title I Coordinator	Tammu Obey
Title I Coordinator	Jennifer Sowell
Data Integrity Specialist	David Kalinowski
Senior Administrative Associate	Kimberly House
Budget Associate	Margie Karami
Administrative Associate	Barbara Bloss
Office Clerk	Anel Perez



# Questions?



A movie theater with rows of red seats in the foreground. In the background, a large screen displays the words "The End" in a white, cursive font, centered within a decorative white border. The screen is flanked by red curtains.

*The End*